

Road Bridge and Radial Spine in N4 Area (JODP)

Client

Jabal Omar Development Company

Scope of Work

Conceptual Design
Schematic Design
Design Development
Detailed Design

Location

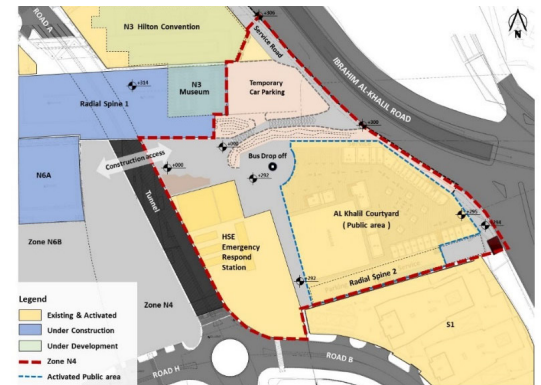
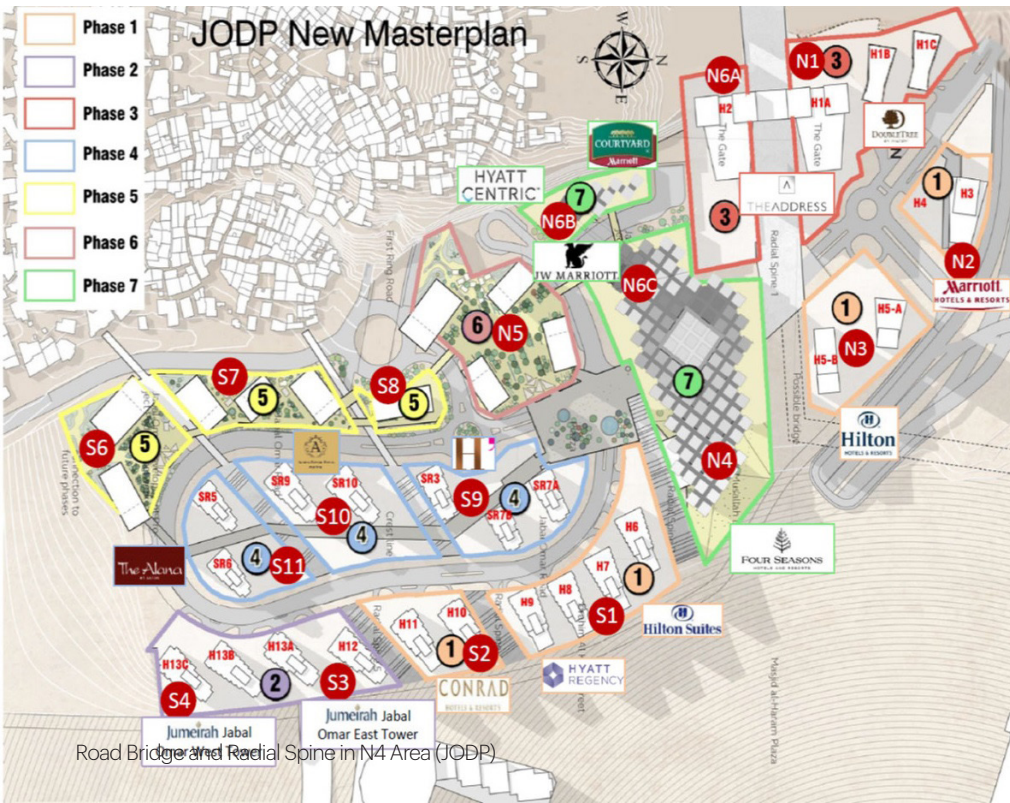
Makkah, KSA

Types of Activities

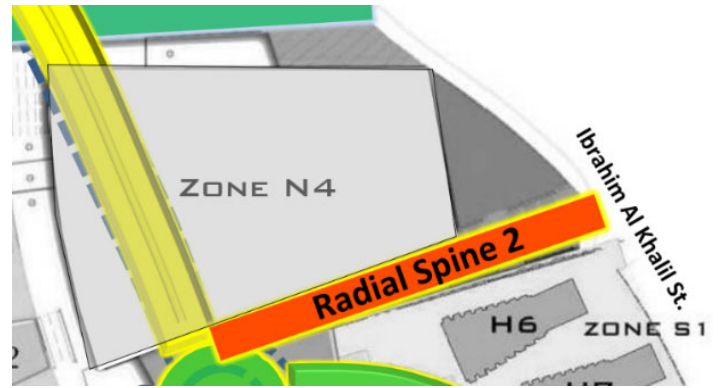
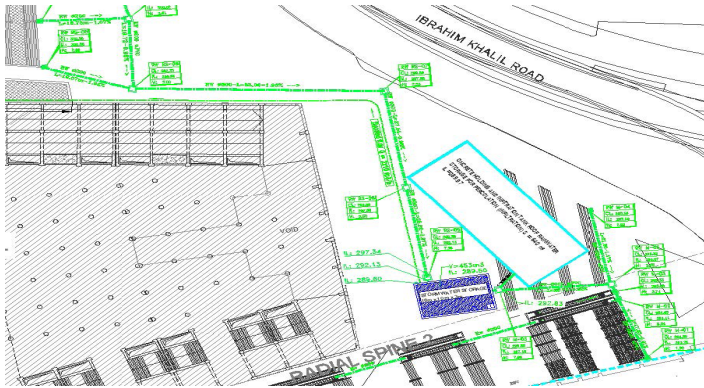
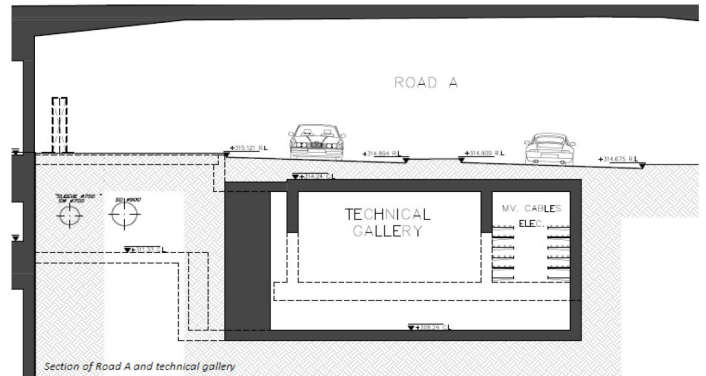
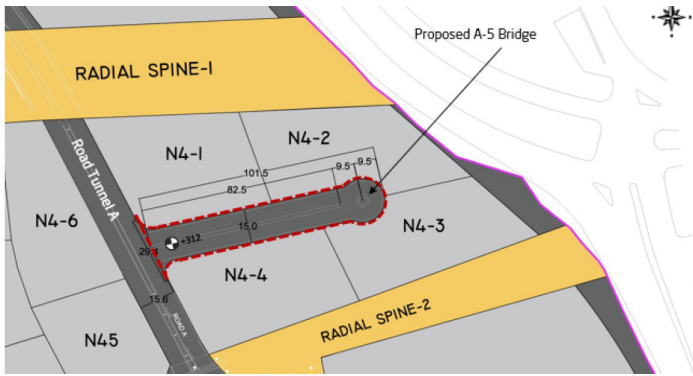
Architecture
Electrical
HVAC
Infrastructure
Low current
Mechanical
Roads
Structure

The project comprises a road bridge, Radial Spine (2), and a storm water network in N4 area. It aims at providing an access to the four zones (N4-1 to N4-4) by constructing the bridge that connects the north part of project to the south part. The bridge has a length of 101.5 m and width of 15 m. The bridge height is the

same as the Road a Tunnel at level +312. Additionally, a roundabout at the end of the bridge allows the vehicles to turn around safely.



Road Bridge and Radial Spine in N4 Area (JODP)



Due to cancellation of Mussalah building, a Radial Spine (2) is designed to allow access to N4-3 and N4-4 areas. Also, the storm water storage is located in N4-3 area to collect storm water from Radial Spine 1 and Radial Spine 2. Water collection is done by shifting the tanks, manholes, and pipes' networks out of N4 area.

Utilities serving the four zones (N4-1 to N4-4) occupy a technical gallery (TG) that is located below the road level to accommodate dry and wet utilities.