

King Abdul-Aziz International Airport (KAIA)

Client

ORASCOM Construction Industries (OCI)

Scope of Work

Shop drawings

Location

Saudi Arabia

Types of Activities

Civil

Electrical

HVAC

Communications and security systems

Mechanical

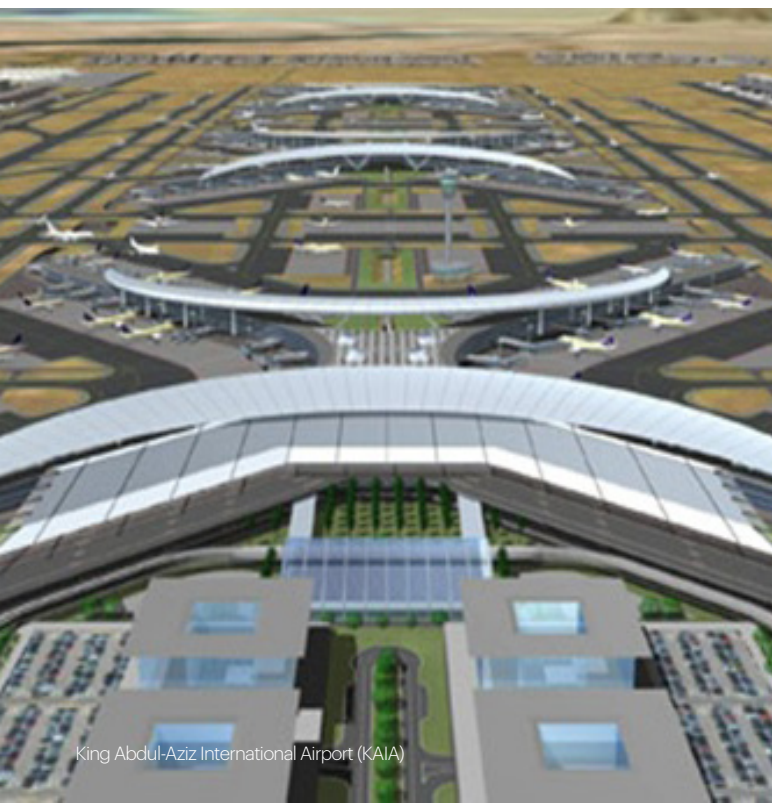
King Abdul Aziz International Airport (KAIA) in Jeddah is the third largest and busiest airport of Saudi Arabia. In 2010, it handled 17.8 million passengers. The airport is the gateway to Saudi Arabia for a large number of pilgrims. It is close to the cities of Mecca and Medina.

To cope with increased traffic and larger aircraft, KAIA is expanding its runway and passenger capacity by developing a new air traffic control tower, a new terminal complex, transport facilities and supporting buildings (out of ECG scope).

The expansion program will be implemented in three phases; the first phase supports up to 30 million passengers per year, increasing to 45 million in the second phase to an eventual capacity of 80 million passengers per year in the third phase by the year 2035.

ECG scope encompasses the review of detailed design documents, preparation of material list, and preparation of shop drawings for the new utility systems, road networks and tunnels for both airside and landside of phase (1). The asphalt-paved road is 60,000 m long, with carriageway width ranging from 20 to 40 m.

By the end of the 3 phases, KAIA will be a landmark economic development for the region, capitalizing on the Kingdom's ambitious growth plans and the Authority's efforts for Saudi Arabia to enhance the status of Jeddah as an international hub.



King Abdul-Aziz International Airport (KAIA)

